



Sahuarita USD New K-8 School  
Estimate 07/06/17

#	Description		BO #4 - Adjacent Ways
	DEMOLITION/ OFF-SITE INFRASTRUCTURE		\$401,170
3	Off-site Utility Infrastructure		\$401,170
	SITE WORK (ROUGH)		\$295,797
6	Surveying/Staking		\$14,500
7	Earthwork & Paving		\$281,297
	SITE WORK (FINISH)		\$0
	STRUCTURE		\$0
	ENCLOSURE		\$0
	INTERIOR FINISHES		\$0
	SPECIALTIES		\$0
	EQUIPMENT		\$0
	MEP SYSTEMS		\$0
	SPECIAL SYSTEMS		\$0
	CONTINGENCIES & ALLOWANCES		\$27,057
3.0%	Construction Contingency		\$27,057

Subtotal		\$724,023
----------	--	-----------

Subtotal (with General Requirements)		\$771,862
--------------------------------------	--	-----------

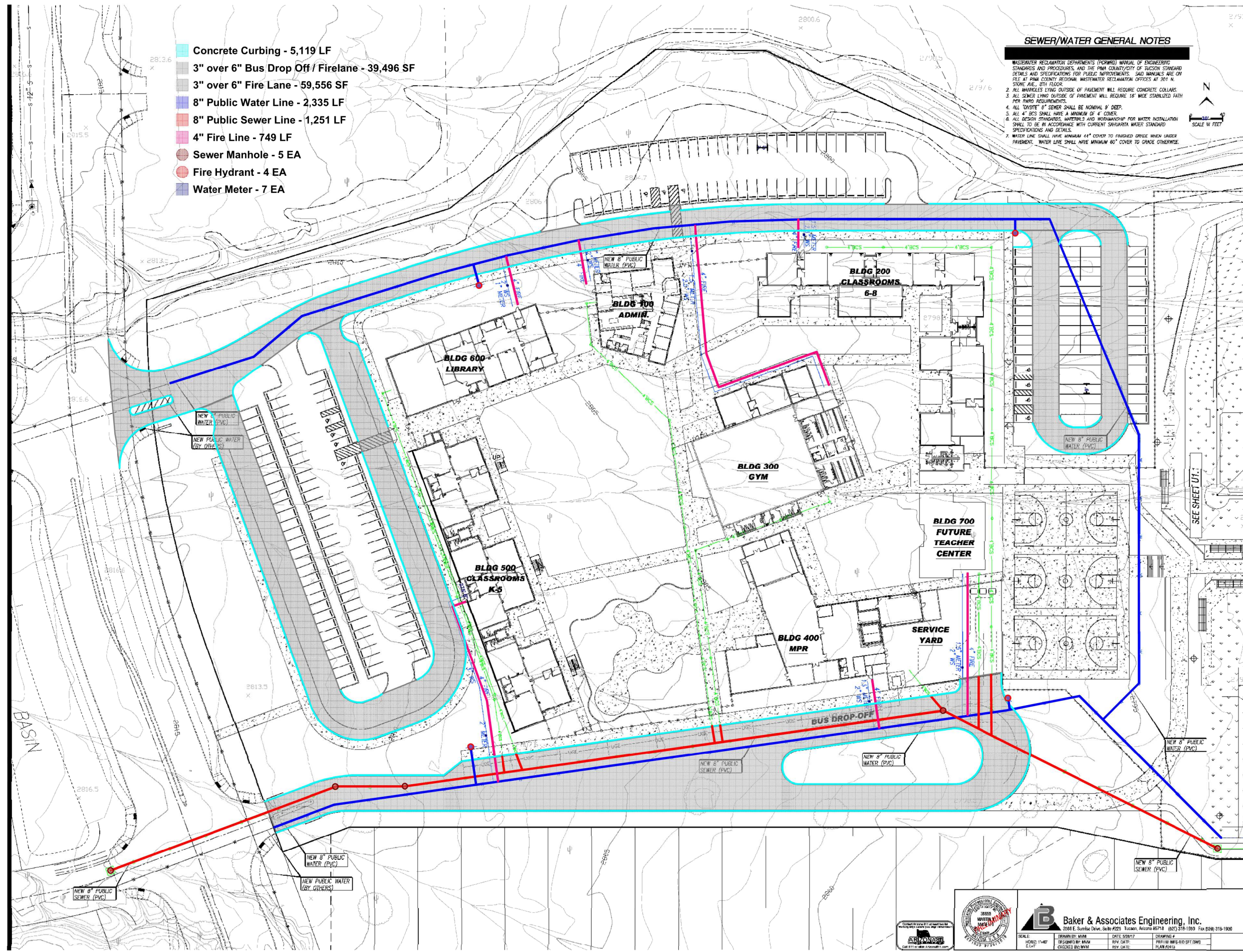
Subtotal (with GR's, Prof. Services, & Insurance)		\$801,236
---	--	-----------

Subtotal (with GR's, Prof Services, Insurance, & Tax)		\$856,797
---	--	-----------

Subtotal (GR's, Prof Services, Insurance, Tax, & Fee)		\$901,892
---	--	-----------

		BO #4 - Adjacent Ways
Estimate Total		\$901,892





SEWER/WATER GENERAL NOTES

- 1. WASTEWATER RECLAMATION DEPARTMENT'S (PWRD) MANUAL OF ENGINEERING STANDARDS AND PROCEDURES, AND THE PIMA COUNTY/CITY OF TUCSON STANDARD DETAILS AND SPECIFICATIONS FOR PUBLIC IMPROVEMENTS. SAID MANUALS ARE ON FILE AT PIMA COUNTY REGIONAL WASTEWATER RECLAMATION OFFICES AT 301 N. STONE AVE., 2ND FLOOR.
- 2. ALL MANHOLES LYING OUTSIDE OF PAVEMENT WILL REQUIRE CONCRETE COLLARS FOR FIRM REQUIREMENTS.
- 3. ALL SEWER LYING OUTSIDE OF PAVEMENT WILL REQUIRE 18" WIDE STABILIZED PATH.
- 4. ALL "ON-SITE" 8" SEWER SHALL BE NOMINAL 9" DEEP.
- 5. ALL 4" BCS SHALL HAVE A MINIMUM OF 4" COVER.
- 6. ALL DESIGN STANDARDS, MATERIALS AND WORKMANSHIP FOR WATER INSTALLATION SHALL TO BE IN ACCORDANCE WITH CURRENT SAHARITA WATER STANDARD SPECIFICATIONS AND DETAILS.
- 7. WATER LINE SHALL HAVE MINIMUM 44" COVER TO FINISHED GRADE WHEN UNDER PAVEMENT. WATER LINE SHALL HAVE MINIMUM 60" COVER TO GRADE OTHERWISE.

- Concrete Curbing - 5,119 LF
- 3" over 6" Bus Drop Off / Firelane - 39,496 SF
- 3" over 6" Fire Lane - 59,556 SF
- 8" Public Water Line - 2,335 LF
- 8" Public Sewer Line - 1,251 LF
- 4" Fire Line - 749 LF
- Sewer Manhole - 5 EA
- Fire Hydrant - 4 EA
- Water Meter - 7 EA

swaim  
ASSOCIATES LTD  
ARCHITECTS AIA

Job  
**1501.06**

date  
**05.31.17**

revisions


**SAHARITA UNIFIED SCHOOL DISTRICT**  
K-8 SCHOOL  
Saharita, AZ 85629  
Foundation Bid Package

**PRELIMINARY  
CIVIL SITE  
UTILITY PLAN**

BLDG XXX  
**U1.0**

**Baker & Associates Engineering, Inc.**  
2001 E. Sunrise Drive, Suite #225 Tucson, Arizona 85718 (800) 318-1900 Fax (520) 318-1900

SCALE: DRAWING BY: DATE: 5/31/17	DESIGNED BY: DATE: 5/31/17	CHECKED BY: DATE: 5/31/17
----------------------------------	----------------------------	---------------------------

**Swaim Associates Ltd.**  
2750 EAST SPEEDWAY 210 TUCSON, ARIZONA 85710 OFFICE (520) 325-3700 FAX (520) 325-1145 WWW.SWAIM-ASSOCIATES.COM



**date**  
**05.31.17**  

---

**revisions**

**PRELIMINARY  
CIVIL SITE  
UTILITY PLAN**

BLDG XXX  
U1.1

